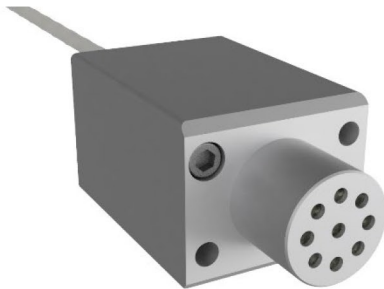


# CVFDR ACCESSORY SHEET

## COCKPIT AREA MICROPHONE & CONTROL PANEL

The optional accessories for the 200 series cockpit voice and flight data recorder product line include a Cockpit Area Microphone, as well as a Cockpit Control Panel – meeting all applicable ED-112A crash survivability system performance regulations.

The Cockpit Area Microphone is available either standalone, or centrally mounted within the Cockpit Control Panel.



The Cockpit Control Panel is available in variants including:

- Standalone CVR
- Standalone CVR with Internal CAM
- Standalone FDR
- Single CVFDR
- Single CVFDR with Internal CAM
- Dual CVFDR
- Dual CVFDR with Internal CAM

Specifications		
	Cockpit Control Panel	Cockpit Area Microphone
Dimensions	145.8mm (5.74") width, 28.3mm (1.15") height, 75mm (3.0") depth	28mm (1.1") width, 23mm (0.91") height, 52mm (2.1") depth
Weight	Less than 400g (< 0.9 lb) with CAM Less than 300g (< 0.7 lb) without CAM	Less than 100 grams (standalone)
Lighting	Backlit text legends, 0-28VDC variable control	N/A
Mounting Type	DZUS Panel Mount	Qty 2x #8-32 fasteners or mounted within cockpit control panel
Construction	Aluminium AMS QQ-A-200/8, ASTM-B221	
Finish	MIL-DTL-5541 Type I Class 3 on exposed and faying metal surfaces MIL-PRF-85285 Top Coat (Black)	MIL-PRF-8625 Anodize, Black
Power supply input	28 VDC nominal, 10 to 80 VDC, DO-160 CAT Z	N/A – powered from CVFDR
Input Connector	M24308/24-9F	N/A – flying lead (two wire M27500 shielded twisted pair)
Mating Connector	M24308/4-8F	
Operating Temperature (operating)	-20 to +50 degrees Celcius	
Operating Temperature (non-operating)	-55 to +85 degrees Celcius	
Operating Altitude	Up to 55,000 ft	
Environmental Qualification	RTCA DO-160G	
Design Assurance	RTCA DO-178C Level D	
Design Approvals	TSO-C123c, TSO-C124c as applicable	
Production Approvals	FAA TSOA, FAA 8130-3 Release	